

**REVIEWED**  
By Anne Nord at 1:36 pm, Jun 17, 2019

6/14/2019

\$

**Worklist: 3480**

<u>LAB_CASE</u>	<u>ITEM</u>	<u>TASK_ID</u>	<u>DESCRIPTION</u>
M2019-2338	1	154865	AM 28 Blood Multi-Drug Quant Panel 2 by LC-Q
P2019-1497	1	154866	AM 28 Blood Multi-Drug Quant Panel 2 by LC-Q



# AM# 28: Multi-Drug Quantitation in Blood by LC-MS/MS

Extraction Date: 6/14/19                      Analyst: Sarah Pickle  
 Plate lot#: 190124 Item #: IDP-112              Plate Expiration: 07/24/19

**Mobile phase A:** 5mM Amm Form + 0.01% FA    **Mobile phase B:** 0.01% Formic Acid in MeOH  
 0.5M Ammonium Hydroxide                      Ethyl Acetate                      20% Methanol in Water

**Blank Blood Lot:** 445283-2                      **Column:** ~~Agilent 120 EC-C18 (2.1x 100-4um)~~  $\phi$

**LCMS-QQQ ID:** 069901                                      Agilent 120 EC-C18 (2.1 x 100-2.7um) 10/2/19

## Pre-Analytic:

- 1. Check levels of mobile phases and needle wash refill as needed. Ensure waste is not full.
- 2. Ensure correct column is installed and begin mobile phase flow allow to equilibrate ~ 30 minutes.
- 3. Create worklist: \_\_\_\_\_

## Analytic:

- 1. Remove standards, plate, controls, and samples from cold storage. Allow to reach room temperature.
- 2. Pipette **250  $\mu$ L blood (calibrated pipette) Pipette ID: #3** in wells of analytical (standards) plate.
- 3. Place on shaking incubator at ambient temp., 900rpm for 15 minutes. *Shaker ID: 067105*
- 4. Pipette **250  $\mu$ L 0.5M ammonium hydroxide** in wells of analytical plate.
- 5. Place on shaking incubator at ambient temp., 900rpm for 15 minutes.
- 6. Transfer **300  $\mu$ L of blood+base** mixture to corresponding wells of SLE+ plate.
- 7. Apply positive pressure for approx. 10-15 seconds (or until no liquid remains on top of sorbent).  
*(Load at 85-100 PSI- Selector to the right) Manifold ID: 067104*
- 8. Wait 5 minutes.
- 9. Add **900  $\mu$ L ethyl acetate.**
- 10. Wait 5 minutes.
- 11. Apply positive pressure for approx. 15 seconds. *(10-15 PSI- Selector to the left).*
- 12. Add **900  $\mu$ L ethyl acetate.**
- 13. Wait 5 minutes.
- 14. Apply positive pressure for approx. 15 seconds. *(10-15 PSI- Selector to the left).*
- 15. Remove plate containing eluate. Place on SPE Dry and evaporate to dryness at approx. 35°C.  
*SPE Dry ID: 067103*
- 16. Reconstitute in **100  $\mu$ L 20% MeOH** and heat seal plate with foil. Place in autosampler and run worklist.

## Post-Analytic

- 1. Create batch and process data.  
 Worklist path: *D:\MassHunter\Data\2019\AM 28\061419 MDQ P1 P2 SP* Batch Name: *MDQ P2*
- 2. Make necessary changes to integration limits
- 3. Integration linear and R<sup>2</sup> values  $\geq 0.98$  for each analyte.
- 4. For unknown samples and controls: response ratio within 20% of average of controls and standards, RT within +/- 5% (tramadol RT +/-2%), S/N for primary transition >10 and secondary transitions >5.
- 5. Did all QCs pass for each analyte? Y / N \_\_\_\_\_ Add Control data to QC tracking spreadsheet.
- 6. Central File Packet to include: LIMS Worklist, Method Checklist, Calibration and Control Reports.

COMMENTS: *Curve Range Limited: flurazepam 5-500*

*Did Not Evaluate: paroxetine*

*7-aminoflunitrazepam, etizolam, flurazepam, levamisole, midazolam, and paroxetine were analyzed in this run.*



# Idaho State Police Forensic Services

§

---

## AM #28 Blood Multi-Drug Confirmatory Analysis by LCMS-QQQ---Panel 2

---

### Methanol External Control Solution (Lot: 020419)

*100 ul each 1 mg/mL stock solution in 9600 ul MeOH*

<i>Component</i>	<i>Source</i>	<i>Source Lot Number</i>	<i>Expiration Date</i>
Methanol (LCMS)	Fisher	184782	
Midazolam	Cerilliant	FE01161704	04/30/2022
Etizolam	Cerilliant	FN06061606	11/30/2020
7-Aminoflunitrazepam	Cerilliant	FN01271505	02/28/2020
Flurazepam	Cerilliant	FE02101501	04/30/2020
Prepared:	02/04/19		
Prepared By:	Tamara Salazar		
Expires:	02/04/2020		

### Blood External Control Solution (Lot: WS020419)

*50 ul of methanol external control solution was added to 9950 ul of blood.*

*Approximately 50ng/mL of each compound.*

<i>Component</i>	<i>Source</i>	<i>Source Lot Number</i>
Negative Blood	Hemostat	445283-1
Methanol External Control Solution	-	020419
Prepared:	02/04/19	
Prepared by:	Tamara Salazar	
Expires:	02/04/2020	

# AM #28 Multi-Drug Quant. Results



**Batch results**  
**Calibration Last Update**

D:\MassHunter\Data\2019\AM 28\061419 MDQ P1 P2 SP\QuantResults\MDQ P2.batch.bin  
6/17/2019 10:57:07 AM

**Instrument**  
**Type**  
**Acq. Method**  
**Sample Position**  
**Injection Volume**  
**Acq. Date-Time**  
**Sample Info.**

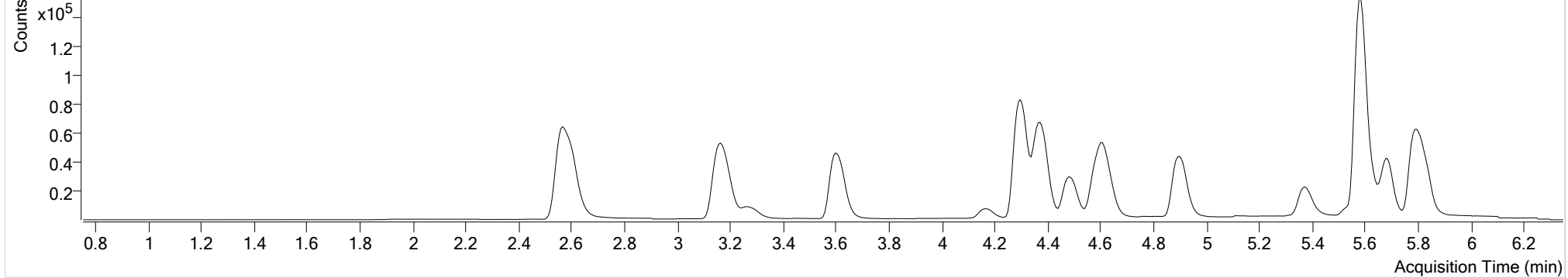
Falco  
Sample  
MDQ P2 Combined 040919.m  
P1-D5  
1  
6/15/2019 4:34:36 AM

**Data File**  
**Sample**  
**Operator**  
**Comment**

p2 Negative Blood.d  
p2 Negative Blood

## Sample Chromatogram

+ TIC MRM (\*\* -> \*\*) p2 Negative Blood.d (p2 Negative Blood)



Name	RT	Resp.	S/N	Ratio	S/N	ISTD Resp.	Final Conc.	
Paroxetine	5.557	813	64.15			17325	32.3990 ng/ml	Did not evaluate

# AM #28 Multi-Drug Quant. Results



**Batch results**  
**Calibration Last Update**

D:\MassHunter\Data\2019\AM 28\061419 MDQ P1 P2 SP\QuantResults\MDQ P2.batch.bin  
 6/17/2019 10:57:07 AM

**Instrument**  
**Type**  
**Acq. Method**  
**Sample Position**  
**Injection Volume**  
**Acq. Date-Time**  
**Sample Info.**

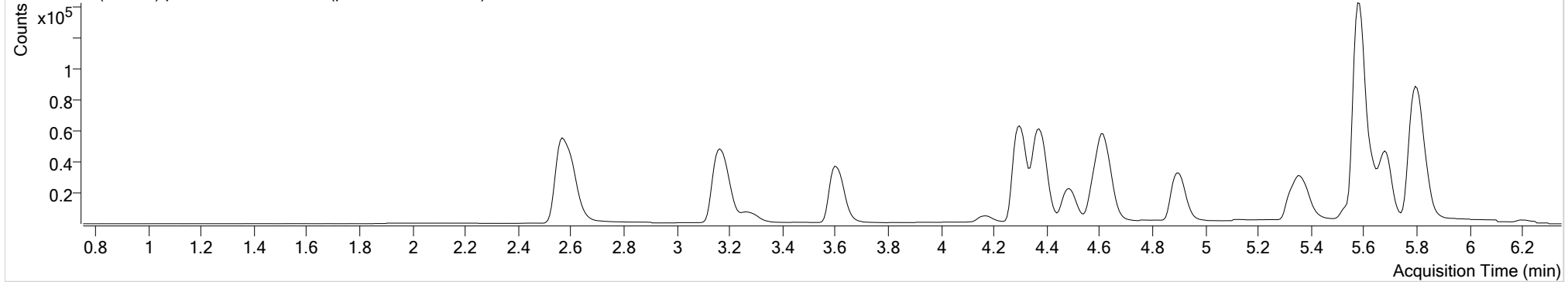
Falco  
 Sample  
 MDQ P2 Combined 040919.m  
 P1-C5  
 1  
 6/15/2019 4:55:29 AM

**Data File**  
**Sample**  
**Operator**  
**Comment**

p2 External Control.d  
 p2 External Control

**Sample Chromatogram**

+ TIC MRM (\*\* -> \*\*) p2 External Control.d (p2 External Control)



Name	RT	Resp.	S/N	Ratio	S/N	ISTD Resp.	Final Conc.	
7-aminoflunitrazepam	4.621	55484	∞	24.2	897.20	79172	37.0750 ng/ml	
Etizolam	5.802	43769	78074.07	26.5	∞	94987	47.4845 ng/ml	
Flurazepam	5.331	59404	37638.39	12.6	10915.72	13837	26.8351 ng/ml	
Midazolam	5.796	22681	1372.71	86.8	1771.18	78804	43.3336 ng/ml	
<b>Paroxetine</b>	<b>5.564</b>	<b>789</b>	<b>∞</b>			<b>20095</b>	<b>25.8822 ng/ml</b>	Did not evaluate

# AM #28 Multi-Drug Quant. Results



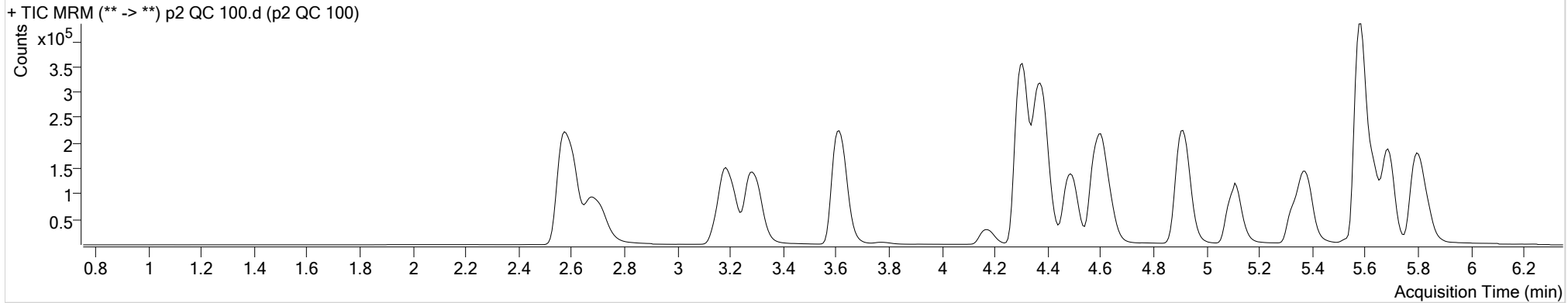
**Batch results**  
**Calibration Last Update**

D:\MassHunter\Data\2019\AM 28\061419 MDQ P1 P2 SP\QuantResults\MDQ P2.batch.bin  
6/17/2019 10:57:07 AM

**Instrument** Falco  
**Type** QC  
**Acq. Method** MDQ P2 Combined 040919.m  
**Sample Position** P1-G5  
**Injection Volume** 1  
**Acq. Date-Time** 6/15/2019 3:10:58 AM  
**Sample Info.**

**Data File** p2 QC 100.d  
**Sample** p2 QC 100  
**Operator**  
**Comment**

**Sample Chromatogram**



Name	RT	Resp.	S/N	Ratio	S/N	ISTD Resp.	Final Conc.	
7-aminoflunitrazepam	4.621	148340	5360.15	24.6	795.72	76786	102.3046 ng/ml	
Etizolam	5.802	87045	∞	27.0	∞	99384	90.8097 ng/ml	
Flurazepam	5.331	218792	∞	12.8	∞	14564	88.9338 ng/ml	
Levamisole	2.687	249955	31563.23	81.1	3101.59	341411	98.6401 ng/ml	
Midazolam	5.803	64999	2314.99	87.7	2772.92	95281	103.3084 ng/ml	
<b>Paroxetine</b>	<b>5.564</b>	<b>3782</b>	<b>1439.06</b>	<b>51.8</b>	<b>3053.31</b>	<b>19090</b>	<b>161.3044 ng/ml</b>	Did not evaluate

# AM #28 Multi-Drug Quant. Results



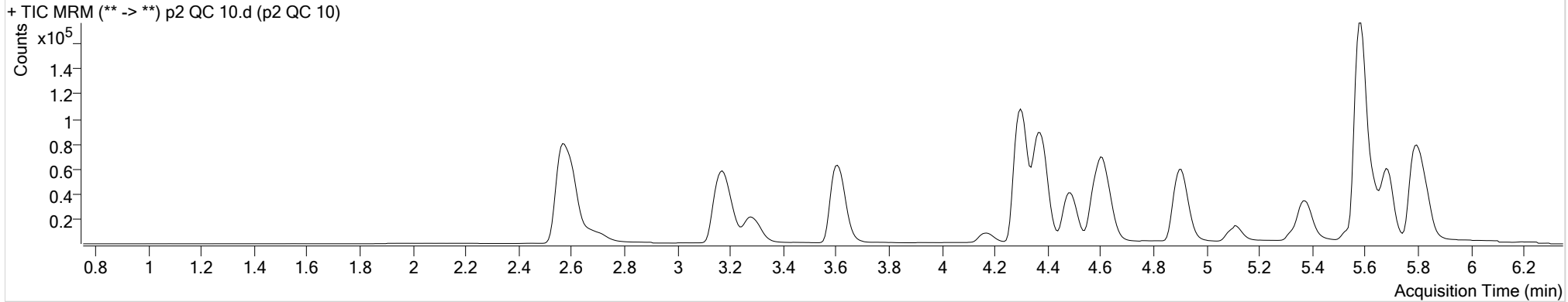
**Batch results**  
**Calibration Last Update**

D:\MassHunter\Data\2019\AM 28\061419 MDQ P1 P2 SP\QuantResults\MDQ P2.batch.bin  
 6/17/2019 10:57:07 AM

**Instrument** Falco  
**Type** QC  
**Acq. Method** MDQ P2 Combined 040919.m  
**Sample Position** P1-H5  
**Injection Volume** 1  
**Acq. Date-Time** 6/15/2019 2:50:04 AM  
**Sample Info.**

**Data File** p2 QC 10.d  
**Sample** p2 QC 10  
**Operator**  
**Comment**

**Sample Chromatogram**



Name	RT	Resp.	S/N	Ratio	S/N	ISTD Resp.	Final Conc.	
7-aminoflunitrazepam	4.621	14814	1002.86	24.6	807.06	76605	10.1886 ng/ml	
Etizolam	5.802	8505	∞	28.3	1667.86	96643	8.5724 ng/ml	
Flurazepam	5.331	21353	679.34	13.4	2609.00	14221	10.6780 ng/ml	
Levamisole	2.687	20670	529.77	81.1	1693.09	334487	9.2738 ng/ml	
Midazolam	5.803	6556	1095.79	89.7	∞	96791	9.8638 ng/ml	
<b>Paroxetine</b>	<b>5.571</b>	<b>863</b>	<b>3342.37</b>	<b>51.3</b>	<b>∞</b>	<b>20805</b>	<b>27.7990 ng/ml</b>	Did not evaluate

# AM #28 Multi-Drug Quant. Results



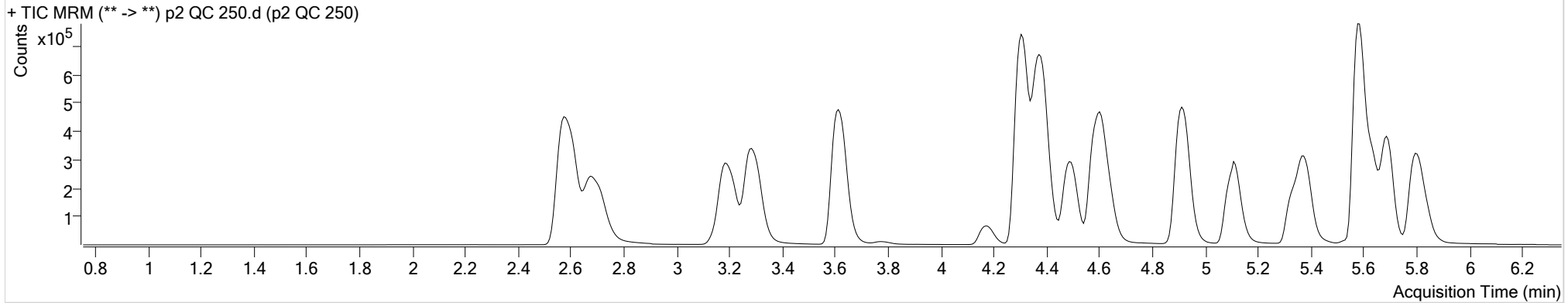
**Batch results**  
**Calibration Last Update**

D:\MassHunter\Data\2019\AM 28\061419 MDQ P1 P2 SP\QuantResults\MDQ P2.batch.bin  
6/17/2019 10:57:07 AM

**Instrument** Falco  
**Type** QC  
**Acq. Method** MDQ P2 Combined 040919.m  
**Sample Position** P1-F5  
**Injection Volume** 1  
**Acq. Date-Time** 6/15/2019 3:31:51 AM  
**Sample Info.**

**Data File** p2 QC 250.d  
**Sample** p2 QC 250  
**Operator**  
**Comment**

**Sample Chromatogram**



Name	RT	Resp.	S/N	Ratio	S/N	ISTD Resp.	Final Conc.	
7-aminoflunitrazepam	4.628	428401	545.42	24.3	925.88	90236	251.4994 ng/ml	
Etizolam	5.802	197296	153881.06	26.9	∞	92892	221.0873 ng/ml	
Flurazepam	5.331	535804	50824.26	13.3	∞	13127	238.2198 ng/ml	
Levamisole	2.680	664728	∞	80.5	27894.87	346545	256.7589 ng/ml	
Midazolam	5.803	160199	1921.75	89.3	5261.38	94987	256.0474 ng/ml	
<b>Paroxetine</b>	<b>5.571</b>	<b>9131</b>	<b>1563.99</b>	<b>52.4</b>	<b>7984.69</b>	<b>17867</b>	<b>428.0731 ng/ml</b>	Did not evaluate



# AM #28 Multi-Drug Quant. Results



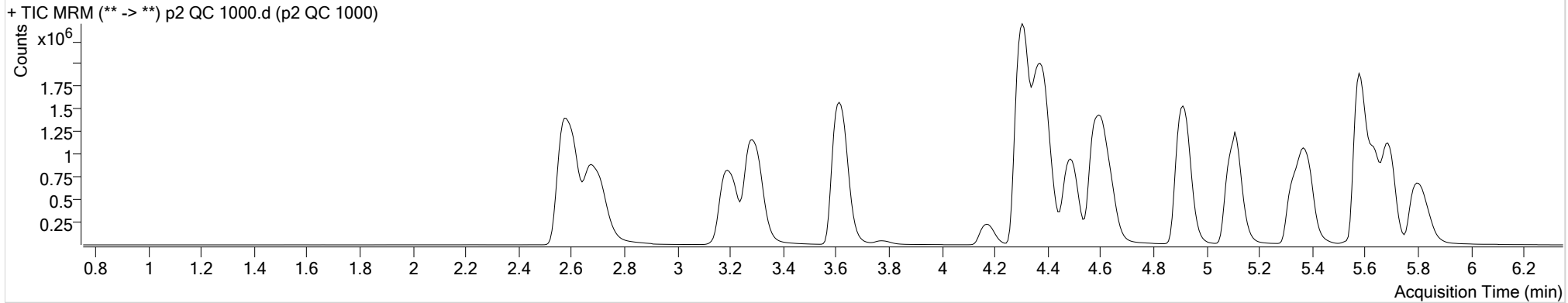
**Batch results**  
**Calibration Last Update**

D:\MassHunter\Data\2019\AM 28\061419 MDQ P1 P2 SP\QuantResults\MDQ P2.batch.bin  
6/17/2019 10:57:07 AM

**Instrument** Falco  
**Type** QC  
**Acq. Method** MDQ P2 Combined 040919.m  
**Sample Position** P1-E5  
**Injection Volume** 1  
**Acq. Date-Time** 6/15/2019 3:52:45 AM  
**Sample Info.**

**Data File** p2 QC 1000.d  
**Sample** p2 QC 1000  
**Operator**  
**Comment**

**Sample Chromatogram**

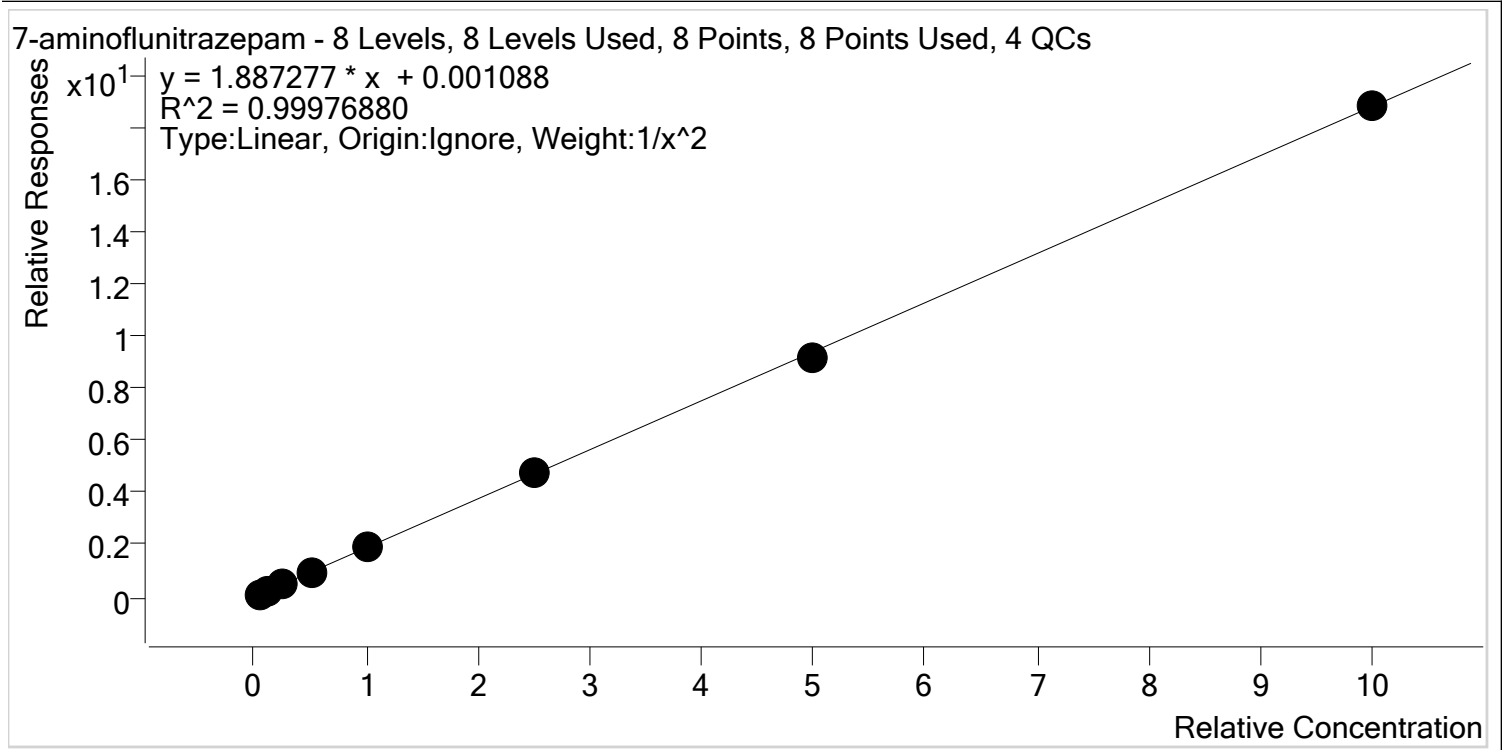


Name	RT	Resp.	S/N	Ratio	S/N	ISTD Resp.	Final Conc.	
7-aminoflunitrazepam	4.621	1842929	28359.17	24.8	32743.41	100510	971.4877 ng/ml	
Etizolam	5.802	506206	5047.11	27.3	14243.79	73019	723.0149 ng/ml	
Flurazepam	5.331	2198266	638566.50	13.1	8656.09	10035	1269.8142 ng/ml	Outside curve range
Levamisole	2.680	2517649	∞	80.6	∞	311366	1079.0146 ng/ml	
Midazolam	5.803	507097	8211.74	89.5	3405.65	76962	1001.5912 ng/ml	
Paroxetine	5.571	39312	4012.73	50.4	39170.51	18370	1816.7645 ng/ml	Did not evaluate



# AM #28 Multi-Drug Quant. Calibration Curve Report

**Batch results** D:\MassHunter\Data\2019\AM 28\061419 MDQ P1 P2 SP\QuantResults\MDQ P2.batch.bin  
**Last Cal. Update** 6/17/2019 10:57 AM  
**Analyst Name** ISP\datastor  
**Analyte** 7-aminoflunitrazepam **Internal Standard** 7-aminoflunitrazepam-D7

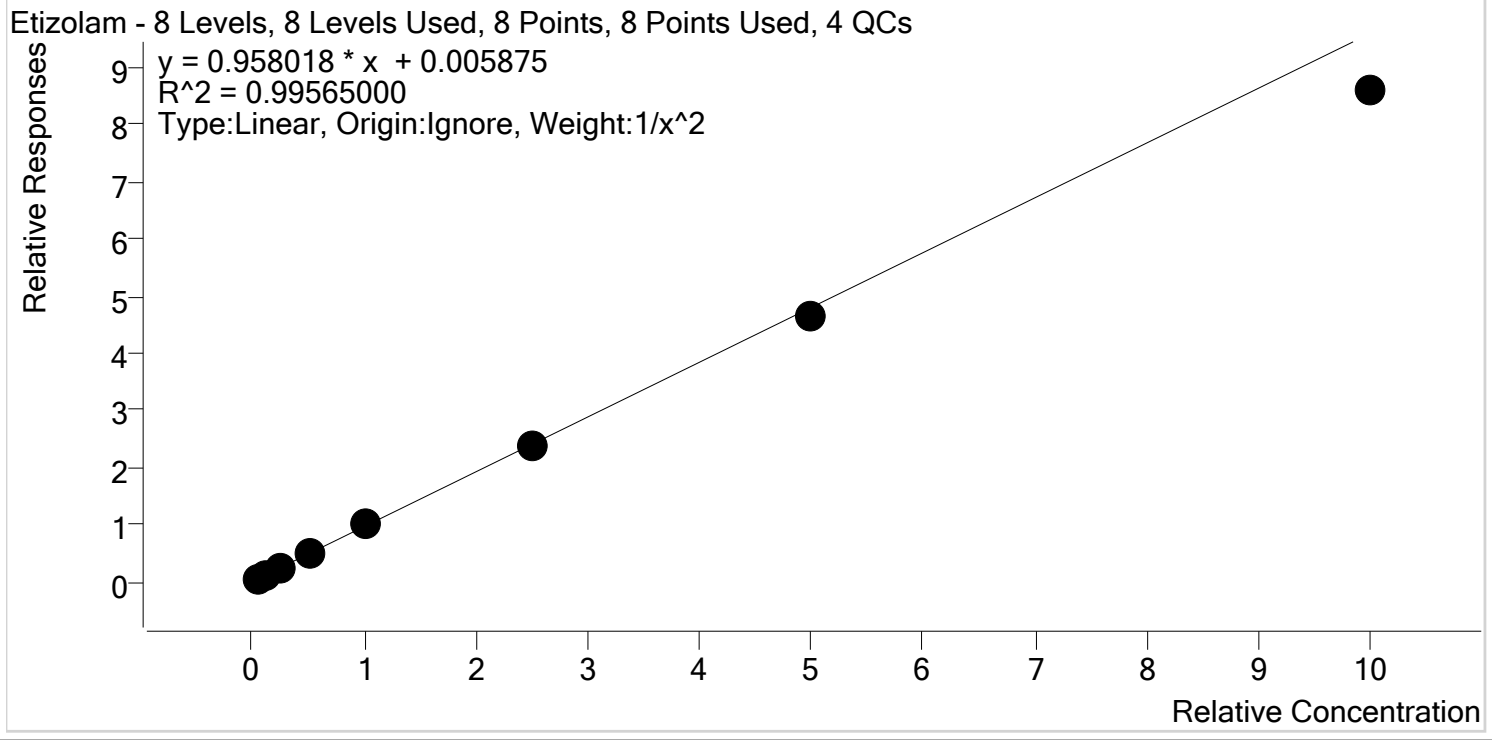


Sample	Level	Enabled	Expected Concentration	Final Concentration	Accuracy
p2 Cal 1-5ng	1	✓	5.0	5.0	100.6
p2 Cal 2- 10ng	2	✓	10.0	9.9	98.8
p2 Cal 3 -25ng	3	✓	25.0	24.9	99.6
p2 Cal 4-50ng	4	✓	50.0	50.0	100.0
p2 Cal 5-100ng	5	✓	100.0	102.4	102.4
p2 Cal 6-250ng	6	✓	250.0	251.6	100.6
p2 Cal 7-500ng	7	✓	500.0	489.7	97.9
p2 Cal 8-1000ng	8	✓	1000.0	1000.7	100.1



# AM #28 Multi-Drug Quant. Calibration Curve Report

**Batch results** D:\MassHunter\Data\2019\AM 28\061419 MDQ P1 P2 SP\QuantResults\MDQ P2.batch.bin  
**Last Cal. Update** 6/17/2019 10:57 AM  
**Analyst Name** ISP\datastor  
**Analyte** Etizolam **Internal Standard** Estazolam-D5

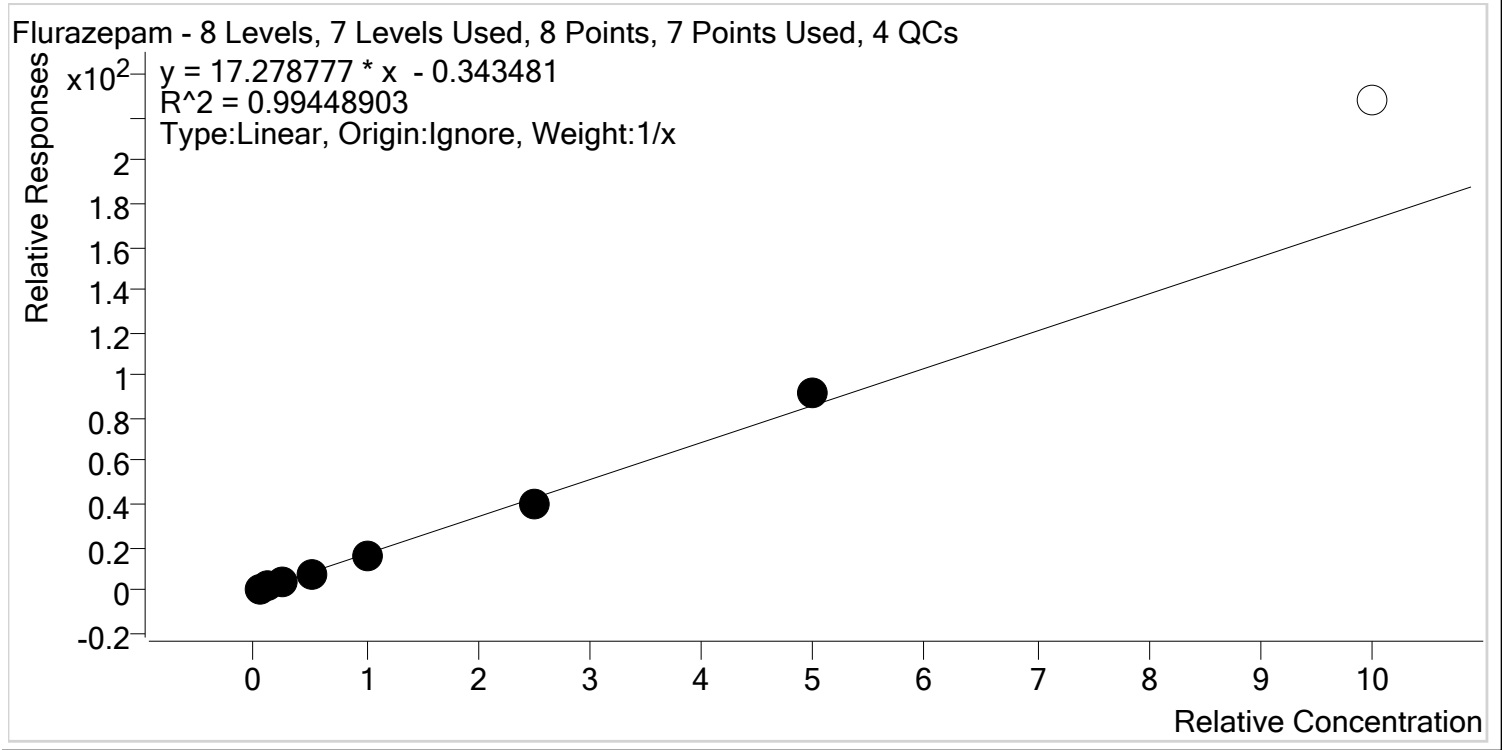


Sample	Level	Enabled	Expected Concentration	Final Concentration	Accuracy
p2 Cal 1-5ng	1	✓	5.0	4.8	96.7
p2 Cal 2- 10ng	2	✓	10.0	10.4	104.4
p2 Cal 3 -25ng	3	✓	25.0	25.3	101.1
p2 Cal 4-50ng	4	✓	50.0	53.4	106.8
p2 Cal 5-100ng	5	✓	100.0	105.6	105.6
p2 Cal 6-250ng	6	✓	250.0	247.9	99.2
p2 Cal 7-500ng	7	✓	500.0	483.0	96.6
p2 Cal 8-1000ng	8	✓	1000.0	895.7	89.6



# AM #28 Multi-Drug Quant. Calibration Curve Report

**Batch results** D:\MassHunter\Data\2019\AM 28\061419 MDQ P1 P2 SP\QuantResults\MDQ P2.batch.bin  
**Last Cal. Update** 6/17/2019 10:57 AM  
**Analyst Name** ISP\datastor  
**Analyte** Flurazepam **Internal Standard** Flunitrazepam-D7



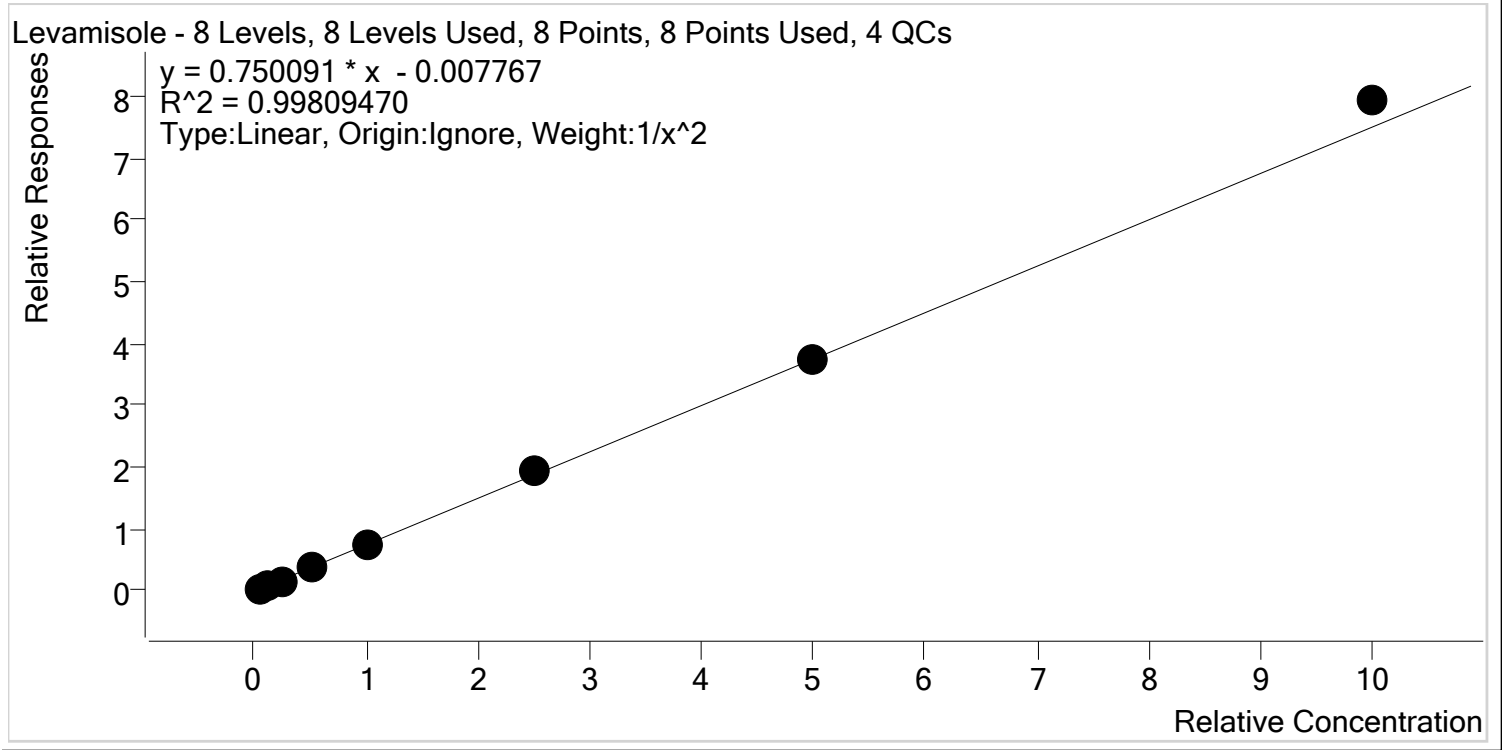
Sample	Level	Enabled	Expected Concentration	Final Concentration	Accuracy
p2 Cal 1-5ng	1	✓	5.0	6.2	123.0
p2 Cal 2- 10ng	2	✓	10.0	10.2	101.9
p2 Cal 3 -25ng	3	✓	25.0	23.0	92.0
p2 Cal 4-50ng	4	✓	50.0	44.1	88.2
p2 Cal 5-100ng	5	✓	100.0	96.9	96.9
p2 Cal 6-250ng	6	✓	250.0	230.3	92.1
p2 Cal 7-500ng	7	✓	500.0	529.3	105.9
p2 Cal 8-1000ng	8	✗	1000.0	1321.0	132.1

\$



# AM #28 Multi-Drug Quant. Calibration Curve Report

**Batch results** D:\MassHunter\Data\2019\AM 28\061419 MDQ P1 P2 SP\QuantResults\MDQ P2.batch.bin  
**Last Cal. Update** 6/17/2019 10:57 AM  
**Analyst Name** ISP\datastor  
**Analyte** Levamisole **Internal Standard** Pseudoephedrine-D3



Sample	Level	Enabled	Expected Concentration	Final Concentration	Accuracy
p2 Cal 1-5ng	1	✓	5.0	5.1	102.2
p2 Cal 2- 10ng	2	✓	10.0	9.9	98.7
p2 Cal 3 -25ng	3	✓	25.0	23.4	93.7
p2 Cal 4-50ng	4	✓	50.0	48.3	96.7
p2 Cal 5-100ng	5	✓	100.0	99.6	99.6
p2 Cal 6-250ng	6	✓	250.0	258.0	103.2
p2 Cal 7-500ng	7	✓	500.0	501.3	100.3
p2 Cal 8-1000ng	8	✓	1000.0	1057.2	105.7

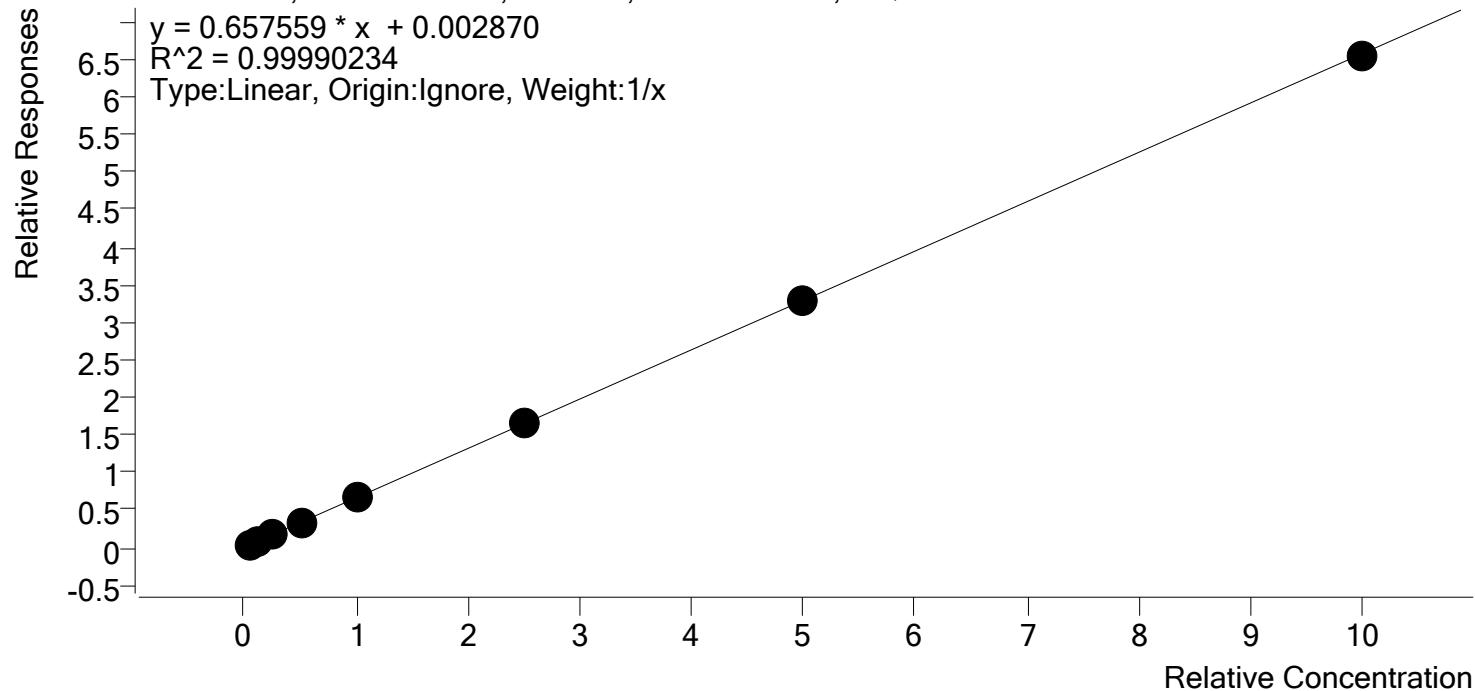
S



# AM #28 Multi-Drug Quant. Calibration Curve Report

**Batch results** D:\MassHunter\Data\2019\AM 28\061419 MDQ P1 P2 SP\QuantResults\MDQ P2.batch.bin  
**Last Cal. Update** 6/17/2019 10:57 AM  
**Analyst Name** ISP\datastor  
**Analyte** Midazolam **Internal Standard** Midazolam-D4

Midazolam - 8 Levels, 8 Levels Used, 8 Points, 8 Points Used, 4 QCs

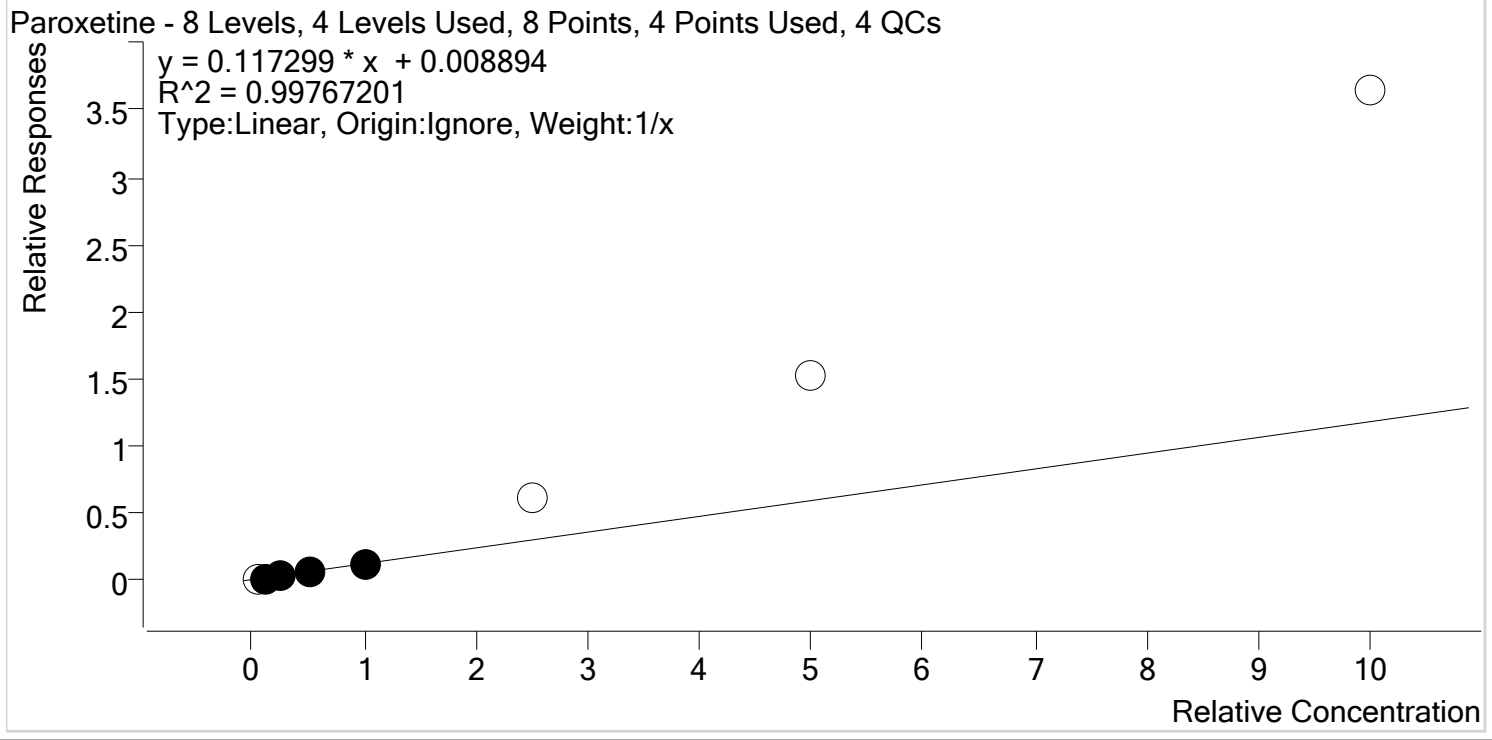


Sample	Level	Enabled	Expected Concentration	Final Concentration	Accuracy
p2 Cal 1-5ng	1	✓	5.0	4.9	97.8
p2 Cal 2- 10ng	2	✓	10.0	9.9	98.7
p2 Cal 3 -25ng	3	✓	25.0	24.9	99.4
p2 Cal 4-50ng	4	✓	50.0	50.1	100.3
p2 Cal 5-100ng	5	✓	100.0	103.3	103.3
p2 Cal 6-250ng	6	✓	250.0	252.3	100.9
p2 Cal 7-500ng	7	✓	500.0	500.5	100.1
p2 Cal 8-1000ng	8	✓	1000.0	994.1	99.4



# AM #28 Multi-Drug Quant. Calibration Curve Report

**Batch results** D:\MassHunter\Data\2019\AM 28\061419 MDQ P1 P2 SP\QuantResults\MDQ P2.batch.bin  
**Last Cal. Update** 6/17/2019 10:57 AM  
**Analyst Name** ISP\datastor  
**Analyte** Paroxetine **Internal Standard** Doxepin-D3



Sample	Level	Enabled	Expected Concentration	Final Concentration	Accuracy
p2 Cal 1-5ng	1	x	5.0	4.8	96.1
p2 Cal 2- 10ng	2	✓	10.0	10.2	102.2
p2 Cal 3 -25ng	3	✓	25.0	25.3	101.0
p2 Cal 4-50ng	4	✓	50.0	47.2	94.5
p2 Cal 5-100ng	5	✓	100.0	102.3	102.3
p2 Cal 6-250ng	6	x	250.0	515.2	206.1
p2 Cal 7-500ng	7	x	500.0	1302.5	260.5
p2 Cal 8-1000ng	8	x	1000.0	3098.3	309.8

Did not evaluate.

# AM #28 Multi-Drug Quant. Results



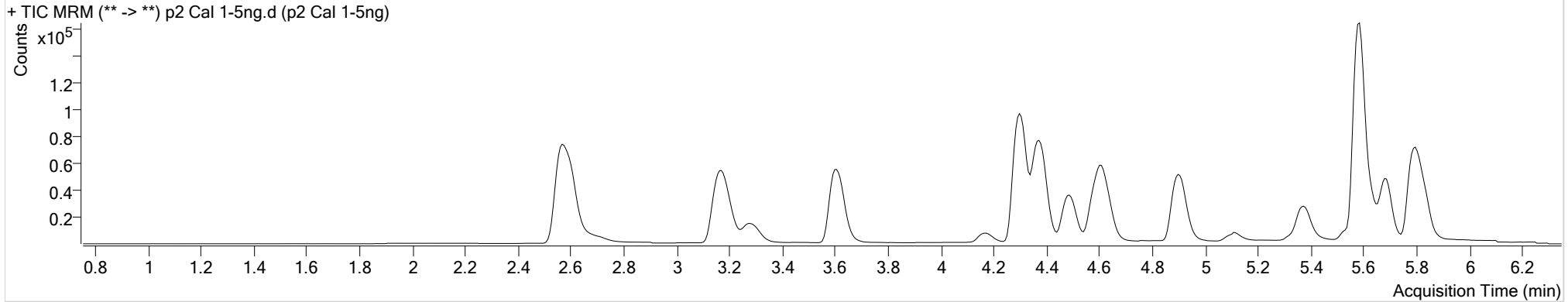
**Batch results**  
**Calibration Last Update**

D:\MassHunter\Data\2019\AM 28\061419 MDQ P1 P2 SP\QuantResults\MDQ P2.batch.bin  
6/17/2019 10:57:07 AM

**Instrument** Falco  
**Type** Cal  
**Acq. Method** MDQ P2 Combined 040919.m  
**Sample Position** P1-H6  
**Injection Volume** 1  
**Acq. Date-Time** 6/15/2019 12:55:14 AM  
**Sample Info.**

**Data File** p2 Cal 1-5ng.d  
**Sample** p2 Cal 1-5ng  
**Operator**  
**Comment**

## Sample Chromatogram



Name	RT	Resp.	S/N	Ratio	S/N	ISTD Resp.	Final Conc.
7-aminoflunitrazepam	4.628	6364	∞	25.2	434.87	66296	5.0285 ng/ml
Etizolam	5.802	4990	10570.59	28.2	1076.34	95606	4.8353 ng/ml
Flurazepam	5.331	10119	9495.37	12.3	871.76	14068	6.1506 ng/ml
Levamisole	2.694	10340	9140.09	84.1	∞	338483	5.1080 ng/ml
Midazolam	5.796	3251	8423.68	94.1	2697.93	92789	4.8914 ng/ml
Paroxetine	5.564	276	122.78			18961	4.8073 ng/ml



# AM #28 Multi-Drug Quant. Results



**Batch results**  
**Calibration Last Update**

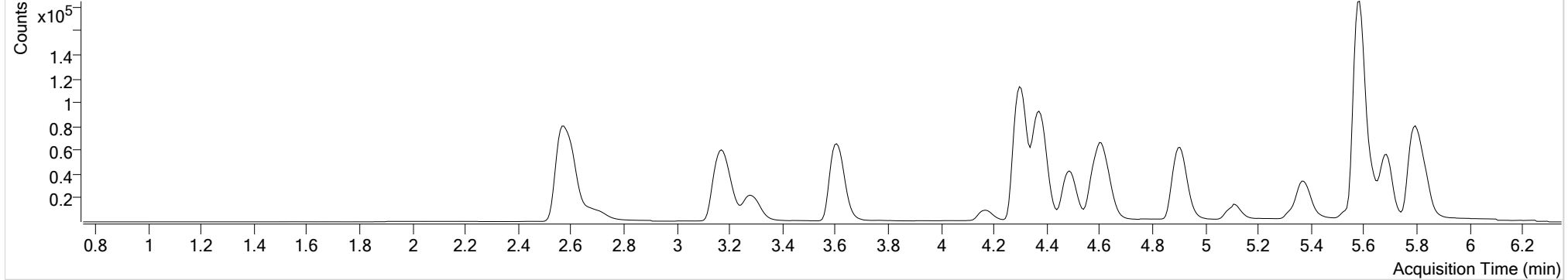
D:\MassHunter\Data\2019\AM 28\061419 MDQ P1 P2 SP\QuantResults\MDQ P2.batch.bin  
6/17/2019 10:57:07 AM

**Instrument** Falco  
**Type** Cal  
**Acq. Method** MDQ P2 Combined 040919.m  
**Sample Position** P1-G6  
**Injection Volume** 1  
**Acq. Date-Time** 6/15/2019 1:05:40 AM  
**Sample Info.**

**Data File** p2 Cal 2- 10ng.d  
**Sample** p2 Cal 2- 10ng  
**Operator**  
**Comment**

## Sample Chromatogram

+ TIC MRM (\*\* -> \*\*) p2 Cal 2- 10ng.d (p2 Cal 2- 10ng)



Name	RT	Resp.	S/N	Ratio	S/N	ISTD Resp.	Final Conc.
7-aminoflunitrazepam	4.628	12645	3149.99	25.3	810.01	67434	9.8783 ng/ml
Etizolam	5.802	10581	∞	25.4	∞	99900	10.4425 ng/ml
Flurazepam	5.331	20643	20109.14	13.8	∞	14571	10.1867 ng/ml
Levamisole	2.694	22349	6500.42	80.5	4325.68	337138	9.8730 ng/ml
Midazolam	5.803	6559	∞	88.7	∞	96768	9.8721 ng/ml
Paroxetine	5.564	400	44.87	37.6	∞	19157	10.2230 ng/ml

# AM #28 Multi-Drug Quant. Results



**Batch results**  
**Calibration Last Update**

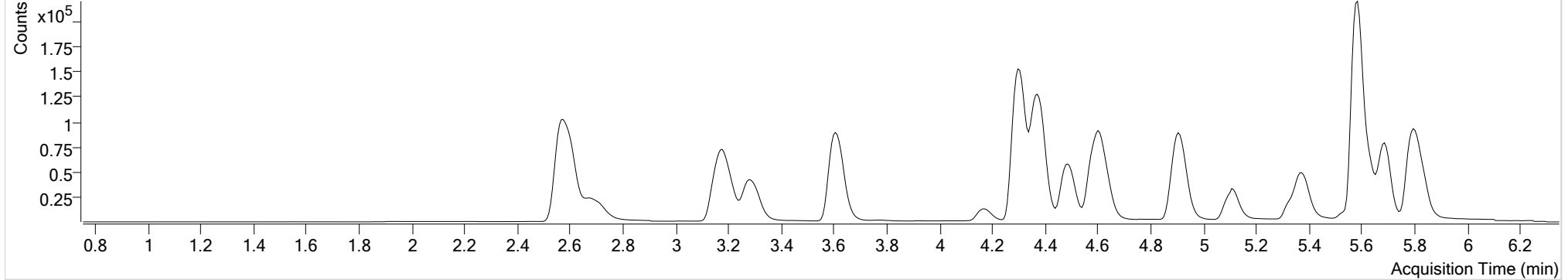
D:\MassHunter\Data\2019\AM 28\061419 MDQ P1 P2 SP\QuantResults\MDQ P2.batch.bin  
6/17/2019 10:57:07 AM

**Instrument** Falco  
**Type** Cal  
**Acq. Method** MDQ P2 Combined 040919.m  
**Sample Position** P1-F6  
**Injection Volume** 1  
**Acq. Date-Time** 6/15/2019 1:16:05 AM  
**Sample Info.**

**Data File** p2 Cal 3 -25ng.d  
**Sample** p2 Cal 3 -25ng  
**Operator**  
**Comment**

## Sample Chromatogram

+ TIC MRM (\*\* -> \*\*) p2 Cal 3 -25ng.d (p2 Cal 3 -25ng)



Name	RT	Resp.	S/N	Ratio	S/N	ISTD Resp.	Final Conc.
7-aminoflunitrazepam	4.628	33262	2323.41	23.7	546.20	70595	24.9079 ng/ml
Etizolam	5.802	24615	12400.60	28.2	6987.18	99224	25.2812 ng/ml
Flurazepam	5.331	51276	∞	13.1	∞	14118	23.0077 ng/ml
Levamisole	2.687	56923	∞	79.8	3085.32	339107	23.4142 ng/ml
Midazolam	5.803	15214	∞	87.5	8733.93	91474	24.8566 ng/ml
Paroxetine	5.571	742	∞	42.8	170.61	19258	25.2508 ng/ml

# AM #28 Multi-Drug Quant. Results



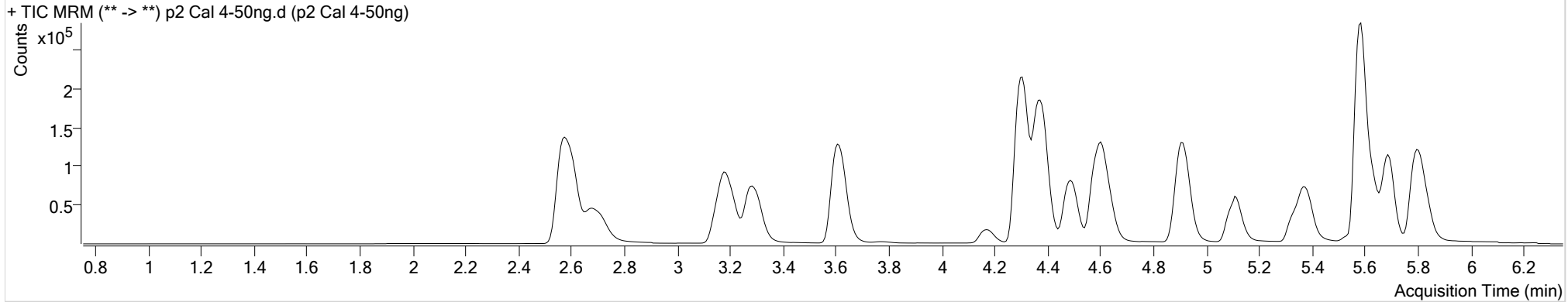
**Batch results**  
**Calibration Last Update**

D:\MassHunter\Data\2019\AM 28\061419 MDQ P1 P2 SP\QuantResults\MDQ P2.batch.bin  
6/17/2019 10:57:07 AM

**Instrument** Falco  
**Type** Cal  
**Acq. Method** MDQ P2 Combined 040919.m  
**Sample Position** P1-E6  
**Injection Volume** 1  
**Acq. Date-Time** 6/15/2019 1:26:33 AM  
**Sample Info.**

**Data File** p2 Cal 4-50ng.d  
**Sample** p2 Cal 4-50ng  
**Operator**  
**Comment**

## Sample Chromatogram



Name	RT	Resp.	S/N	Ratio	S/N	ISTD Resp.	Final Conc.
7-aminoflunitrazepam	4.621	72670	4921.68	23.6	1546.41	76913	50.0053 ng/ml
Etizolam	5.802	49525	∞	26.5	20513.78	95728	53.3891 ng/ml
Flurazepam	5.331	100485	∞	13.3	∞	13811	44.0946 ng/ml
Levamisole	2.687	117684	14190.38	81.1	6396.02	331652	48.3419 ng/ml
Midazolam	5.803	29963	2703.14	92.2	1001.73	90120	50.1263 ng/ml
Paroxetine	5.571	1172	∞	51.9	742.52	18228	47.2403 ng/ml

# AM #28 Multi-Drug Quant. Results



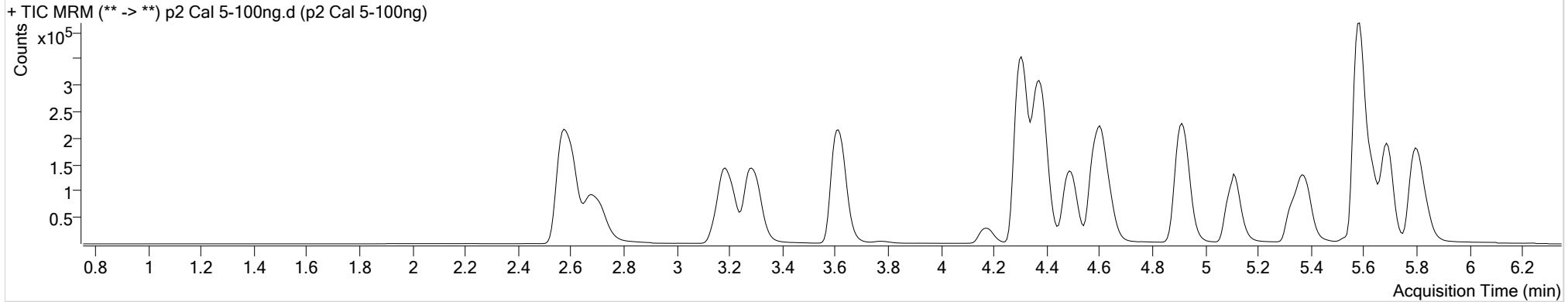
**Batch results**  
**Calibration Last Update**

D:\MassHunter\Data\2019\AM 28\061419 MDQ P1 P2 SP\QuantResults\MDQ P2.batch.bin  
6/17/2019 10:57:07 AM

**Instrument** Falco  
**Type** Cal  
**Acq. Method** MDQ P2 Combined 040919.m  
**Sample Position** P1-D6  
**Injection Volume** 1  
**Acq. Date-Time** 6/15/2019 1:36:59 AM  
**Sample Info.**

**Data File** p2 Cal 5-100ng.d  
**Sample** p2 Cal 5-100ng  
**Operator**  
**Comment**

**Sample Chromatogram**



Name	RT	Resp.	S/N	Ratio	S/N	ISTD Resp.	Final Conc.
7-aminoflunitrazepam	4.621	154226	12146.51	23.9	23284.70	79792	102.3571 ng/ml
Etizolam	5.802	96678	13306.21	26.8	∞	94979	105.6363 ng/ml
Flurazepam	5.331	215022	∞	12.6	7754.89	13111	96.9008 ng/ml
Levamisole	2.687	249147	14220.73	81.2	42457.01	337000	99.5981 ng/ml
Midazolam	5.803	63772	∞	88.7	4205.81	93450	103.3433 ng/ml
Paroxetine	5.571	2540	704.04	46.8	1048.22	19713	102.2859 ng/ml

# AM #28 Multi-Drug Quant. Results



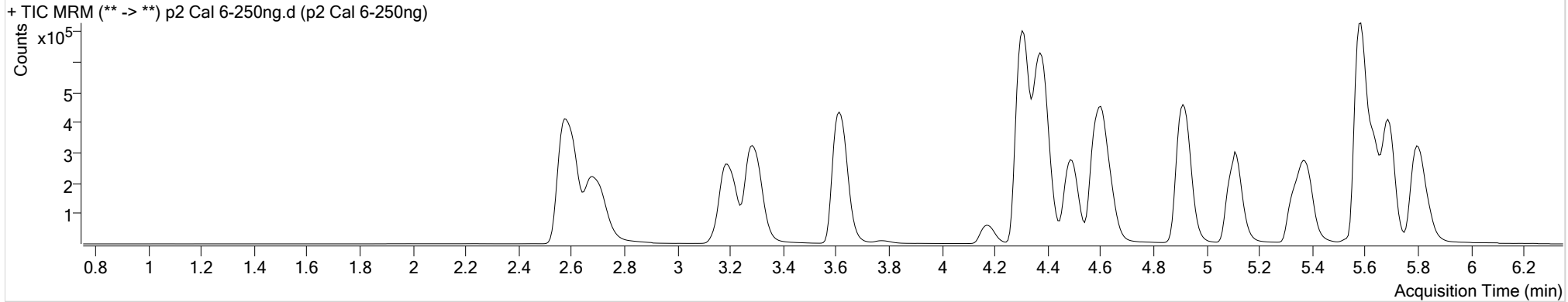
**Batch results**  
**Calibration Last Update**

D:\MassHunter\Data\2019\AM 28\061419 MDQ P1 P2 SP\QuantResults\MDQ P2.batch.bin  
6/17/2019 10:57:07 AM

**Instrument** Falco  
**Type** Cal  
**Acq. Method** MDQ P2 Combined 040919.m  
**Sample Position** P1-C6  
**Injection Volume** 1  
**Acq. Date-Time** 6/15/2019 1:47:24 AM  
**Sample Info.**

**Data File** p2 Cal 6-250ng.d  
**Sample** p2 Cal 6-250ng  
**Operator**  
**Comment**

**Sample Chromatogram**



Name	RT	Resp.	S/N	Ratio	S/N	ISTD Resp.	Final Conc.
7-aminoflunitrazepam	4.621	396717	11325.01	24.1	6815.41	83526	251.6088 ng/ml
Etizolam	5.802	209020	∞	26.8	∞	87797	247.8902 ng/ml
Flurazepam	5.331	501232	∞	13.1	76749.05	12704	230.3365 ng/ml
Levamisole	2.687	616435	38002.65	79.6	3501.77	319817	257.9989 ng/ml
Midazolam	5.803	156053	∞	90.3	5683.85	93898	252.3074 ng/ml
Paroxetine	5.571	12232	∞	52.1	7191.30	19949	515.1525 ng/ml

# AM #28 Multi-Drug Quant. Results



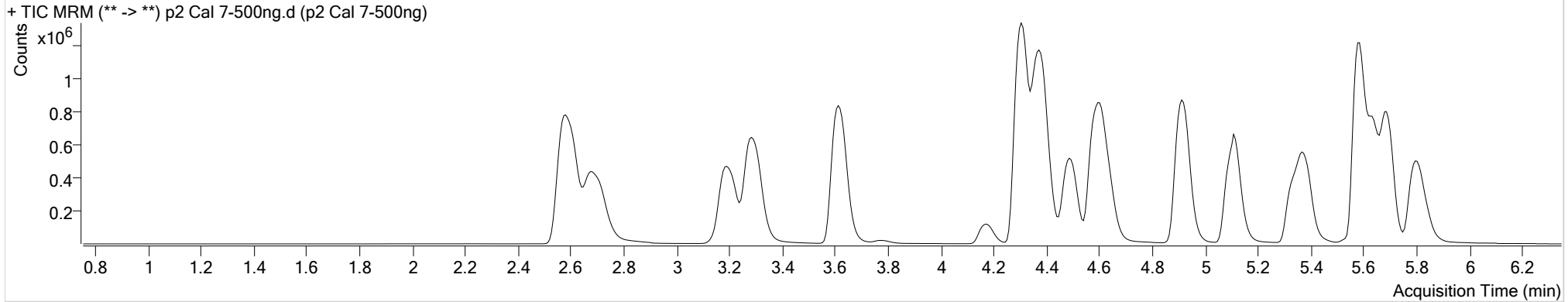
**Batch results**  
**Calibration Last Update**

D:\MassHunter\Data\2019\AM 28\061419 MDQ P1 P2 SP\QuantResults\MDQ P2.batch.bin  
6/17/2019 10:57:07 AM

**Instrument** Falco  
**Type** Cal  
**Acq. Method** MDQ P2 Combined 040919.m  
**Sample Position** P1-B6  
**Injection Volume** 1  
**Acq. Date-Time** 6/15/2019 1:57:50 AM  
**Sample Info.**

**Data File** p2 Cal 7-500ng.d  
**Sample** p2 Cal 7-500ng  
**Operator**  
**Comment**

## Sample Chromatogram



Name	RT	Resp.	S/N	Ratio	S/N	ISTD Resp.	Final Conc.
7-aminoflunitrazepam	4.628	900494	869.78	24.6	15272.45	97431	489.6611 ng/ml
Etizolam	5.802	368257	∞	26.8	∞	79485	482.9953 ng/ml
Flurazepam	5.331	1074665	10776.42	13.2	∞	11794	529.3230 ng/ml
Levamisole	2.687	1219786	4533.30	80.5	88141.85	325085	501.2686 ng/ml
Midazolam	5.803	293731	5904.38	89.8	2268.46	89180	500.4564 ng/ml
Paroxetine	5.571	37248	14306.11	50.9	21609.85	24239	1302.4975 ng/ml

# AM #28 Multi-Drug Quant. Results



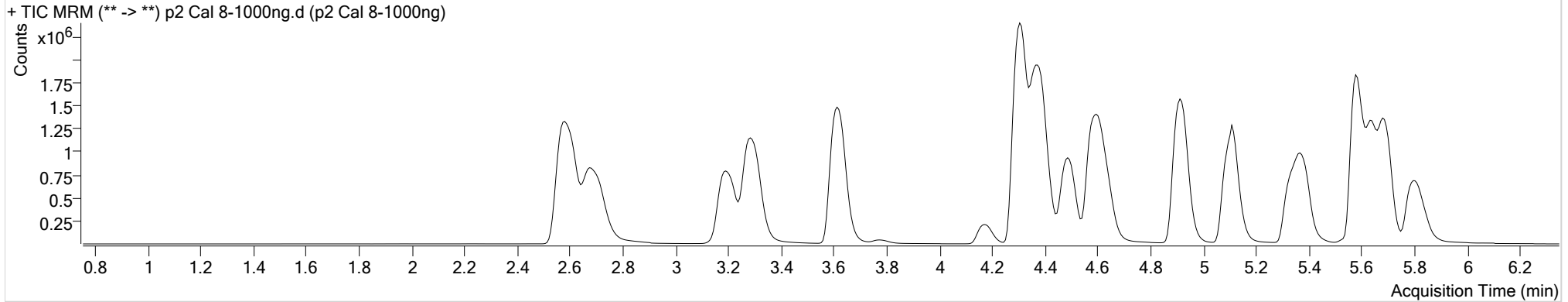
**Batch results**  
**Calibration Last Update**

D:\MassHunter\Data\2019\AM 28\061419 MDQ P1 P2 SP\QuantResults\MDQ P2.batch.bin  
6/17/2019 10:57:07 AM

**Instrument** Falco  
**Type** Cal  
**Acq. Method** MDQ P2 Combined 040919.m  
**Sample Position** P1-A6  
**Injection Volume** 1  
**Acq. Date-Time** 6/15/2019 2:08:16 AM  
**Sample Info.**

**Data File** p2 Cal 8-1000ng.d  
**Sample** p2 Cal 8-1000ng  
**Operator**  
**Comment**

## Sample Chromatogram



Name	RT	Resp.	S/N	Ratio	S/N	ISTD Resp.	Final Conc.
7-aminoflunitrazepam	4.628	1696922	31769.02	24.8	15224.68	89845	1000.7129 ng/ml
Etizolam	5.802	546787	4225.82	26.5	1941.45	63674	895.7452 ng/ml
Flurazepam	5.331	2093617	∞	13.2	48117.09	9186	1320.9945 ng/ml
Levamisole	2.680	2338991	37713.04	80.8	101925.98	295253	1057.1736 ng/ml
Midazolam	5.803	495955	5296.38	90.0	6917.88	75834	994.1465 ng/ml
Paroxetine	5.571	86489	∞	51.3	∞	23740	3098.2624 ng/ml